

pCon.configurator Online Installation for Windows

EAIWS, EAILS, DataClient

Content

1	Download install packages.....	2
2	Installation EAIWS, EAILS	2
3	Installation DataClient.....	2
4	Creating licenses	3
5	Placing licenses	3
6	Restart OCF services (EAILS+EAIWS) with valid licenses	3
7	Process OFML data.....	4

1 Download install packages

If not yet done, please download the latest installation package for Windows from <https://download-center.pcon-solutions.com/> and unzip it (e.g. to C:\).

Download pCon.update DataClient <https://www.eastern-graphics.com/su?ref=14ffa8807bb520abeef074751add8b19>

2 Installation EAIWS, EAILS ...

Adapt the included config.xml to your needs. For example "installPath" and "useSSL".
Run the install.ps1 from install folder in Powershell with administrator permissions.

```
PowerShell.exe -ExecutionPolicy Bypass -File .\install.ps1
```

This will create the following file structure on the server:

```
\pCon\EAILS...  
\pCon\EAIWS...
```

And will create the needed services to (re)start the online configurator in Windows service manager.

3 Installation DataClient

Create this folder

```
\pCon\DC
```

Unzip "*p-ud_dc_[version].zip*" into this folder and install vcredist from here:

```
\pCon\DC\pCon.update\DataClient\prerequisites\vcredist_x86.exe
```

After that run this batch script:

```
\pCon\DC\pCon.update\DataClient\bin\enable_eaiws_pmv_installation.bat
```

4 Creating licenses

In order to create licenses, we need to know the hostID of the server. It is written on top of each EAIWS log file. Therefore, please send us one log file from here:

`\pCon\EAIWS\var\log`

Or copy/paste this line "*hostname=....., hostid=.....*" in an email and send it to us.

As soon as we have the hostID, we will create the licenses and send it back to you.

5 Placing licenses

As soon as you have the license files from us, place that one with **443** in name here:

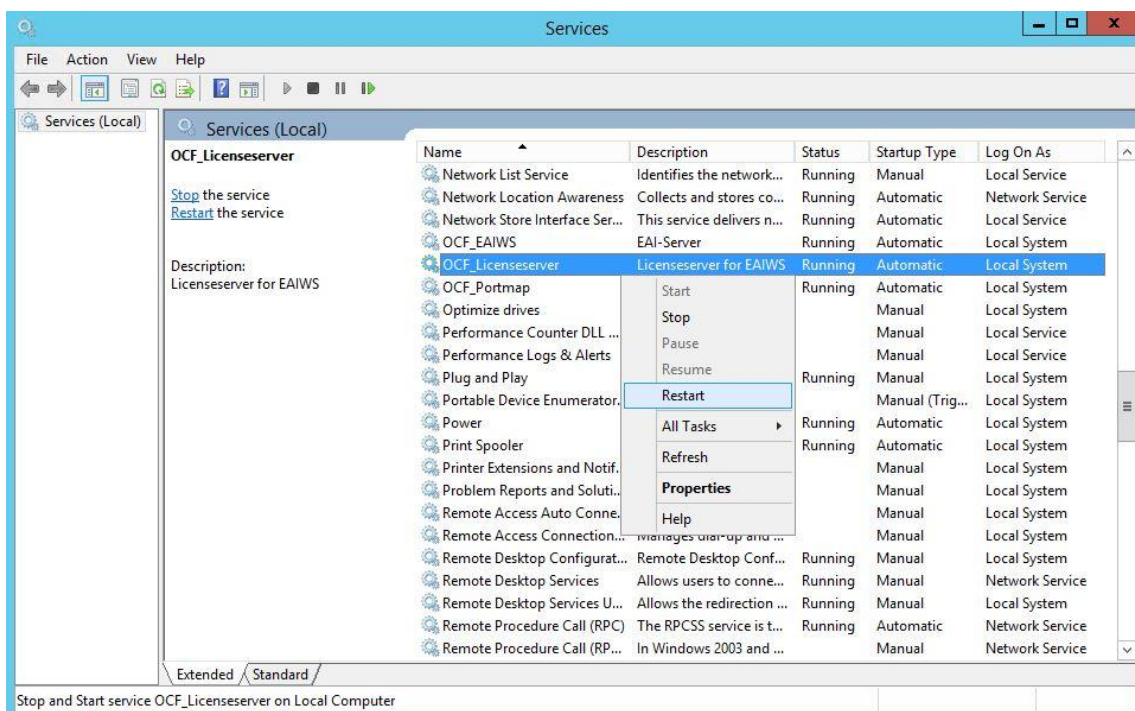
`\pCon\DC\pCon.update\DataClient\etc\licenses\EAIWS_443_....lic`

and all other .lic files here

`\pCon\EAILS\etc\licenses\`

6 Restart OCF services (EAILS+EAIWS) with valid licenses

Open Windows Service and scroll to OCF_Licenser. Open the context menu on it and chose Restart.



7 Process OFML data

In both cases (manual/local or installation via pCon.update Server) it will be recommend to install the OFML data via pCon.update DataClient!

Usually, the data installations from the pCon.update Server (<https://update.easterngraphics.com>) will be placed here: `\pCon_data\pCon.update`

The manual, local installations could be placed here: `\pCon_data\manual`

You can decide to separate the manual installation with different subdirectories (perhaps with dates: YYYY-MM-DD), but it's not necessary.

For the manual installation you have to transfer the update packages into a defined directory from where the DataClient can install the OFML data.

This directory could be: `\pCon_data\manual\pCon.update_packages`

For all these ways to install OFML data there is an update script (Batch script: `dcc_update.bat`) needed, which triggers (with the correct parameters) the DataClient to install the OFML data. After the installation was done, you have to create a so called "startup" file to connect the OFML data with the pCon.configurator Online.

The basic content of this file (which should be created inside the directory of EAIWS: `./etc/startup`) is the following:

```
app.gf.data.profile=default  
app.basket.currencies=currencies
```

```
app.framework.locale=<locale>  
app.gf.data.profile=<catalog profile filename without extension>  
app.gf.data.profile.path=<catalog profile path>
```

Here you have to replace the <placeholder> in line 3, 4 and 5 with the correct parameters.
e.g.:

```
app.framework.locale=en_US  
app.gf.data.profile=egr_ANY  
app.gf.data.profile.path=C:\pCon\_data\pCon.update\catalogs\profiles
```

Our recommendation would be to use the catalog registration file to connect to the OFML data:

```
app.gf.data.profile=default  
app.basket.currencies=currencies  
app.framework.locale=en_US  
app.gf.data.profile.path=C:\pCon\_data\pCon.update\catalogs\profiles  
app.gf.data.profile.registration=C:\pCon\_data\pCon.update\catalogs\default.profiles
```

Before you can call/run the update script you have to adapt the following parameters inside this script:

- line 4: setup the correct path to the "dcc" binary of the DataClient
 (set "DCCexe=C:\pCon\DC\pCon.update\DataClient\bin\dcc.exe")

- line 5: setup the correct path to the EAIWS directory
 (set "EAIWSDir=C:\pCon\EAIWS\")

- line 7: setup the correct pCon.update user name
 (set "USER=")

- line 8: setup the correct pCon.update password
 (set "PASSWORD=")

- line 9: setup the correct server/directory
 (set "SERVER=https://update.easterngraphics.com")
 or
 (set "SERVER=C:\pCon_data>manual\pCon.update_packages")

- line 10: setup the correct path where to install the OFML data
 (set "DATAPATH=C:\pCon_data\pCon.update\")

- line 20: edit the name of the startup file
 (copy /B **startup.cfg** +,,)

In case of installing OFML data from a local source, the parameter "SERVER" has to be the path, where you have uploaded the pCon.update packages (*.zip, *.xml). "User" and "password" is not needed for this way of install.

After the script was edited correctly you can run this script and the OFML will be installed.

Legal remarks

© EasternGraphics GmbH | Albert-Einstein-Straße 1 | 98693 Ilmenau | GERMANY

This work (whether as text, file, book or in other form) is copyright. All rights are reserved by EasternGraphics GmbH. Translation, reproduction or distribution of the whole or parts thereof is permitted only with the prior agreement in writing of EasternGraphics GmbH.

EasternGraphics GmbH accepts no liability for the completeness, freedom from errors, topicality or continuity of this work or for its suitability to the intended purposes of the user. All liability except in the case of malicious intent, gross negligence or harm to life and limb is excluded.

All names or descriptions contained in this work may be the trademarks of the relevant copyright owner and as such legally protected. The fact that such trademarks appear in this work entitles no-one to assume that they are for the free use of all and sundry.