

pCon.configurator Online Installation for Windows

Content

1	Download Install Packages	2
2	Update Installation to EAIWS 4.18 and higher.....	2
3	Setting up EAIWS and EAILS (Initial Installation).....	3
3.1	Installation EAIWS and EAILS.....	3
3.2	Installation EAIWS Plugins.....	3
3.3	Licensing.....	3
3.4	Start OCF services (EAILS+EAIWS) with valid licenses.....	3
4	Setting up pCon.update DataClient.....	4
4.1	Installation DataClient.....	4
4.2	Generate Refresh Token.....	4
4.3	DataClient Installation Script.....	5
5	Connecting OFML data with EAIWS.....	6

1 Download Install Packages

If not yet done, please download the latest installation package of EAIWS for Windows from <https://download-center.pcon-solutions.com/?cat=7> and unzip it (e.g. to C:\).

Download pCon.update DataClient for pCon.configurator Online here <https://download-center.pcon-solutions.com/?cat=90>

2 Update Installation to EAIWS 4.18 and higher

Our Windows Installer is not intended for updating an existing solution, but exclusively for initial installation.

With EAIWS 4.18 Java RE 21 is required (previously it was Java RE 8). Please make sure to check the System Requirements before you start the update process.

In order to be able to use the installer in the update scenario please follow the steps shown below:

1. Stop the OCF_EAIWS and OCF_Licenserver services.
2. Backup the license file(s) from the EAILS/etc/licenses/*.lic folder.
3. Remove the following folders: EAILS + jdk1.8*.
4. Rename the EAIWS folder (e.g., EAIWS_old) so that plugins, pricing, etc. can be copied to the new EAIWS installation later on.
5. Start Admin CMD and execute the following commands:

```
sc delete OCF_Licenserver
sc delete OCF_EAIWS
```

6. Edit the config.xml of the installation package (see also chapter 3.1) and set IIS and DataClient installation to false:

```
<iis install="false">
<dataclient install="false">
```

7. Run PS1 Installer (see chapter 3.1) and check the output.
8. After successful completion, move/copy the following folders from the old EAIWS to the new EAIWS folder:
 - plugins (it is recommended to also check for new versions of the plugins in the [Download Center](#))
 - etc/pricing
 - etc/plugins
 - etc/startup
9. Place previously backed up license file(s) *.lic in the EAILS/etc/licenses folder
10. Stop the OCF_EAIWS and OCF_Licenserver services if they are already running after installation
11. Start the OCF_Licenserver service and check the latest log file EAILS/var/log/ for errors.
12. If EAILS is running correctly, start the OCF_EAIWS service and check the latest log file in EAIWS/var/log/ for errors.

3 Setting up EAIWS and EAILS (Initial Installation)

3.1 Installation EAIWS and EAILS

Adapt the included config.xml to your needs. For example "installPath" and "useSSL". Run the install.ps1 from install folder in Powershell with administrator permissions.

```
PowerShell.exe -ExecutionPolicy Bypass -File .\install.ps1
```

This will create the following file structure on the server:

```
\pCon\EAILS...  
\pCon\EAIWS...
```

And will create the needed services to (re)start the online configurator in Windows service manager.

3.2 Installation EAIWS Plugins

In case EAIWS plugins are required please download the corresponding plugin from the [Download Center](#). The plugins do not provide an install package. They have to be placed in the EAIWS directory manually. To do so please unzipt the downloaded ZIP-file to

```
\pCon\EAIWS\plugins
```

3.3 Licensing

In order to create licenses, we need to know the hostID of the server. It is written on top of each EAILS log file. Therefore, please send us one log file from here:

```
\pCon\EAILS\var\log
```

Or copy/paste this line "hostname=....., hostid=....." in an email and send it to us.

As soon as we have the hostID, we will create the licenses and send it back to you.

Please place all .lic files here

```
\pCon\EAILS\etc\licenses\
```

3.4 Start OCF services (EAILS+EAIWS) with valid licenses

Open Windows Services and scroll to OCF_Licenseserver. Open the context menu on it and chose Restart.

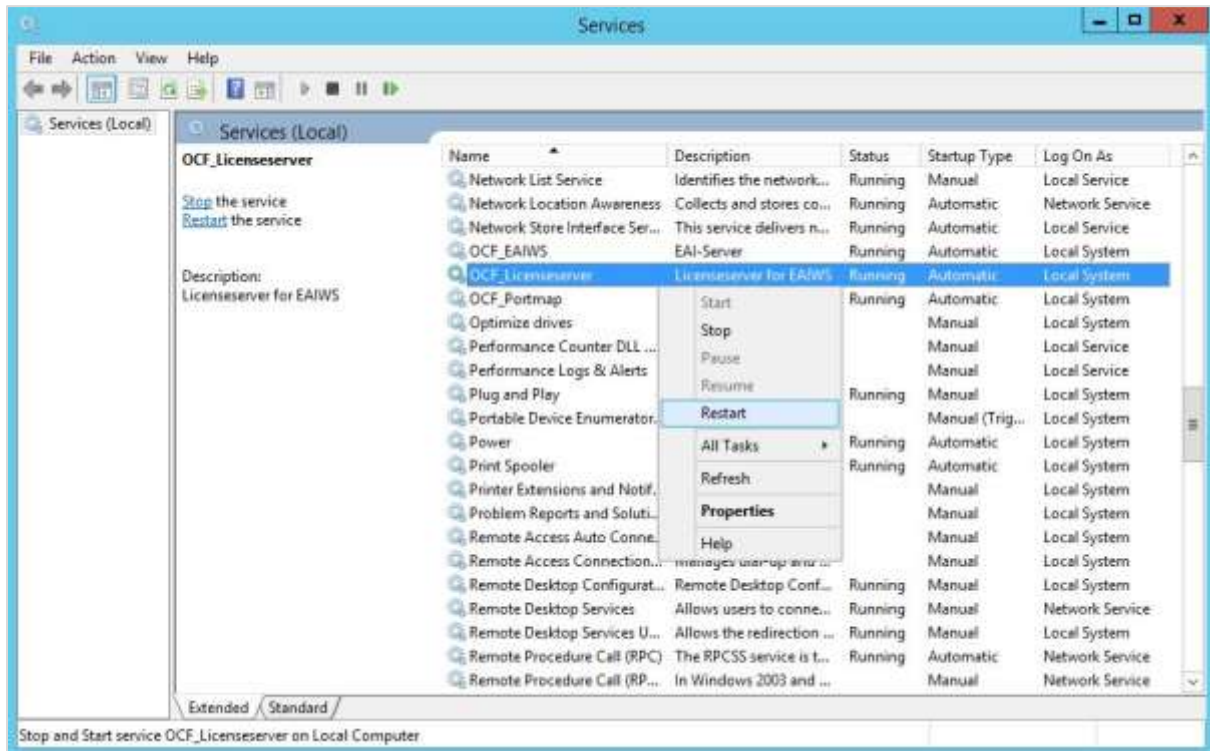


Figure 1 Windows Services

4 Setting up pCon.update DataClient

4.1 Installation DataClient

Create this folder

```
\pCon\DC
```

Unzip "pCon.update_DataClient_Windows.zip" into this folder and install vcredist from here:

```
\pCon\DC\pCon.update\DataClient\prerequisites\vc_redist.x64.exe
```

After that run this batch script:

```
\pCon\DC\pCon.update\DataClient\bin\dc4eaiws_pmv.bat
```

4.2 Generate Refresh Token

In order to obtain updates from the internet and for licensing purposes DataClient must be linked to a pCon.login account. We suggest to use a neutral account, that is not linked to a specific person. Please make sure this account is assigned a "pCon.update DataClient for Server" license.

Linking DataClient with a pCon.login account is done by obtaining a refresh token from:

<https://login.pcon-solutions.com/account/access>

Tokens are not automatically revoked by dcc as they may be needed again later/elsewhere. Some commands offer an option to revoke the token. When these options are used no checks are performed on whether the token is still in use by saved favorites.

Note: Till version 1.11 pCon.update DataClient was licensed by lic-Files. To migrate from lic-File to pCon.login licensing please inform support@easterngraphics.com, so we can provide a "pCon.update DataClient for Server" license to your pCon.login organization.

4.3 DataClient Installation Script

There are two possible ways to install OFML data with pCon.update DataClient:

- Updating data from pCon.update Server
- Updating data from a local directory

When updating data from a local directory we suggest to create the directory: `\pCon_data>manual`

The update packages should then be transferred into a defined sub-directory from where the DataClient can install the OFML data. This directory could be: `\pCon_data>manual\pCon.update_packages`

You can decide to separate the manual installation with different subdirectories (perhaps with dates: YYYY-MM-DD), but it's not necessary.

Which scenario and which directory path to use by the DataClient is set up in an update script. You can download a standard version of the update script here: https://downloads.pcon-solutions.com/pCon/configuratorOnline/tools/dcc_update.bat.zip Before you can call/run the update script you have to adapt the following parameters inside this script:

```

line 4:      setup the correct path to the "dcc" binary of the DataClient
             (set "DCCexe=C:\pCon\DC\pCon.update\DataClient\bin\dcc.exe")

line 5:      setup the correct path to the EAIWS directory
             (set "EAIWSDir=C:\pCon\EAIWS\")

line 8:      setup the correct pCon.update token (see chapter 4.2)
             (set "TOKEN=")

line 9:      setup the correct path where to install the OFML data
             (set "DATAPATH=C:\pCon\_data\pCon.update\")

line 10:     in case of local data installation comment out this line and
             set variable POOLDIR to desired directory
             (set "POOLDIR=C:\pCon\_data>manual\pCon.update_packages ")

line 21/22:  setup the update source (internet/directory) by commenting
             out/removing the other
             (%DCCexe% set-update-source --internet)
             or
             (%DCCexe% set-update-source --local --local-path %POOLDIR%)

line 20:     edit the name of the startup file (see chapter 5)
             (copy /B startup.cfg +,,)

```

After the script was edited correctly you can run this script and the OFML will be installed.

5 Connecting OFML data with EAIWS

After the data installation was done, you have to create a so called "startup" file to connect the OFML data with the pCon.configurator Online.

The basic content of this file (which should be created inside the directory of EAIWS: `./etc/startup`) is the following:

```
app.gf.data.profile=default
app.basket.currencies=currencies

app.framework.locale=<locale>
app.gf.data.profile=<catalog profile filename without extension>
app.gf.data.profile.path=<catalog profile path>
```

Here you have to replace the <placeholder> in line 3, 4 and 5 with the correct parameters. e.g.:

```
app.framework.locale=en_US
app.gf.data.profile=egr_ANY
app.gf.data.profile.path=C:\pCon\_data\pCon.update\catalogs\profiles
```

Our recommendation would be to use the catalog registration file to connect to the OFML data:

```
app.gf.data.profile=default
app.basket.currencies=currencies
app.framework.locale=en_US
app.gf.data.profile.path=C:\pCon\_data\pCon.update\catalogs\profiles
app.gf.data.profile.registration=C:\pCon\_data\pCon.update\catalogs\default
.profiles
```

Legal remarks

© EasternGraphics GmbH | Albert-Einstein-Straße 1 | 98693 Ilmenau | GERMANY

This work (whether as text, file, book or in other form) is copyright. All rights are reserved by EasternGraphics GmbH. Translation, reproduction or distribution of the whole or parts thereof is permitted only with the prior agreement in writing of EasternGraphics GmbH.

EasternGraphics GmbH accepts no liability for the completeness, freedom from errors, topicality or continuity of this work or for its suitability to the intended purposes of the user. All liability except in the case of malicious intent, gross negligence or harm to life and limb is excluded.

All names or descriptions contained in this work may be the trademarks of the relevant copyright owner and as such legally protected. The fact that such trademarks appear in this work entitles no-one to assume that they are for the free use of all and sundry.