

# Catalog Image Generator – Manual for the pCon.planner Plugin

## Content

1	Introduction .....	1
2	Technical Information .....	1
3	Installation .....	1
3.1	Installation Process.....	1
3.2	Authentication via pCon.login .....	2
4	Using the plugin: General Notes .....	2
4.1	The User Interface .....	2
4.2	Application Menu .....	3
4.3	Settings .....	4
4.4	Filter Line .....	6
4.5	Navigation Area .....	6
4.6	Profile Editor vs. Configuration Profile .....	8
5	Profile Editor .....	9
5.1	Profile Editor Toolbar .....	9
5.2	Configuration Options of the Profile Editor .....	10
5.3	Import and Export Profiles .....	14
6	Configuration Profiles .....	15
6.1	Configuration Profile Toolbar .....	16
6.2	Creating a Configuration Profile .....	16
6.3	Adding Properties to a Configuration Profile .....	17
6.4	Deleting Properties from a Configuration Profile.....	18
6.5	Assign a Configuration Profile to Articles .....	18
7	Generate Images .....	19
8	Hints for the Profile Manager in pCon.planner .....	20

# 1 Introduction

With the Plugin Catalog Image Generator you can quickly and easily create professional article images automatically. The plugin provides four standard profiles with presets for this purpose.

- The standard profile *Hidden Line - Orthographic* displays only the edges that are in the field of view of the observer.
- The profile *Realistic - Perspective* focuses primarily on the display of textures and colors in high quality.
- *Photorealistic - Perspective* provides highest quality photorealistic images rendered by means of the OSPRay renderer integrated in pCon.planner. This profile also focusses on the display of textures and colors and adds realistic shadows to the images.
- The profile *Photorealistic – Variable aspect ratio* also generates high quality photorealistic images while specifying the length of the longest edge of the image.

For the professional creation of images, the Catalog Image Generator also provides a wide range of additional settings, which are described below.

## 2 Technical Information

**Please note:** The plugin will work with pCon.planner 8.9 PRO or a newer version of pCon.planner PRO.

The system requirements for the pCon.planner 8 can be found under the following link:  
[https://docs.pcon-solutions.com/pCon/planner/8.9/pCon.planner\\_8.9\\_System\\_Requirements\\_en.pdf](https://docs.pcon-solutions.com/pCon/planner/8.9/pCon.planner_8.9_System_Requirements_en.pdf)

## 3 Installation


### 3.1 Installation Process

To install the plugin, proceed as follows:

1. Download the ZIP package of the plugin provided by EasternGraphics.
2. Unzip the package.
3. Start the setup file contained in the Catalog Image Generator package. Please note that you need administrator rights for the installation.
4. The next time pCon.planner 8 PRO is started and the user is logged into pCon.login via the pCon.planner, the Plugin *Catalog Image Generator* will appear in the ribbon toolbar *OFML Toolbox* ready for operation.

## 3.2 Authentication via pCon.login

To use the plugin, you need a separate license. Licensing of the plugin as well as access to your manufacturer catalogs are provided via pCon.login.

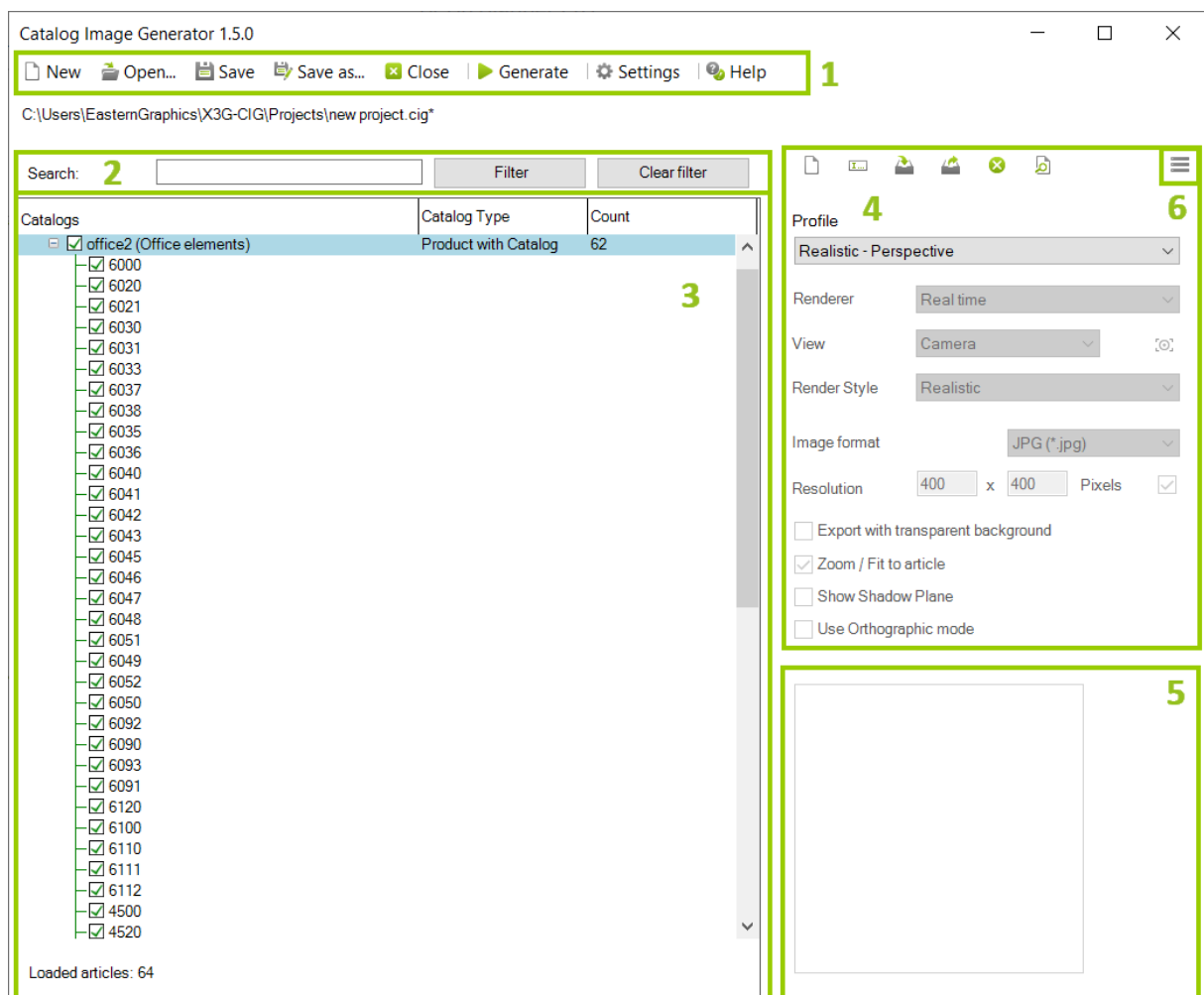
To run the plugin, you have to log onto pCon.login via the login button (  ) in the upper right corner of pCon.planner.

The license can be ordered via [egr-orders@easterngraphics.com](mailto:egr-orders@easterngraphics.com). The license has to be assigned to your pCon.login organization and to the group of users of the Catalog Image Generator within the organization.

More information on pCon.login: <https://login.pcon-solutions.com/en/help>









## 4 Using the plugin: General Notes

### 4.1 The User Interface



Number	Functionality
1	Application menu
2	Filter line
3	Navigation area
4	Profile editor
5	Image preview
6	Hamburger menu

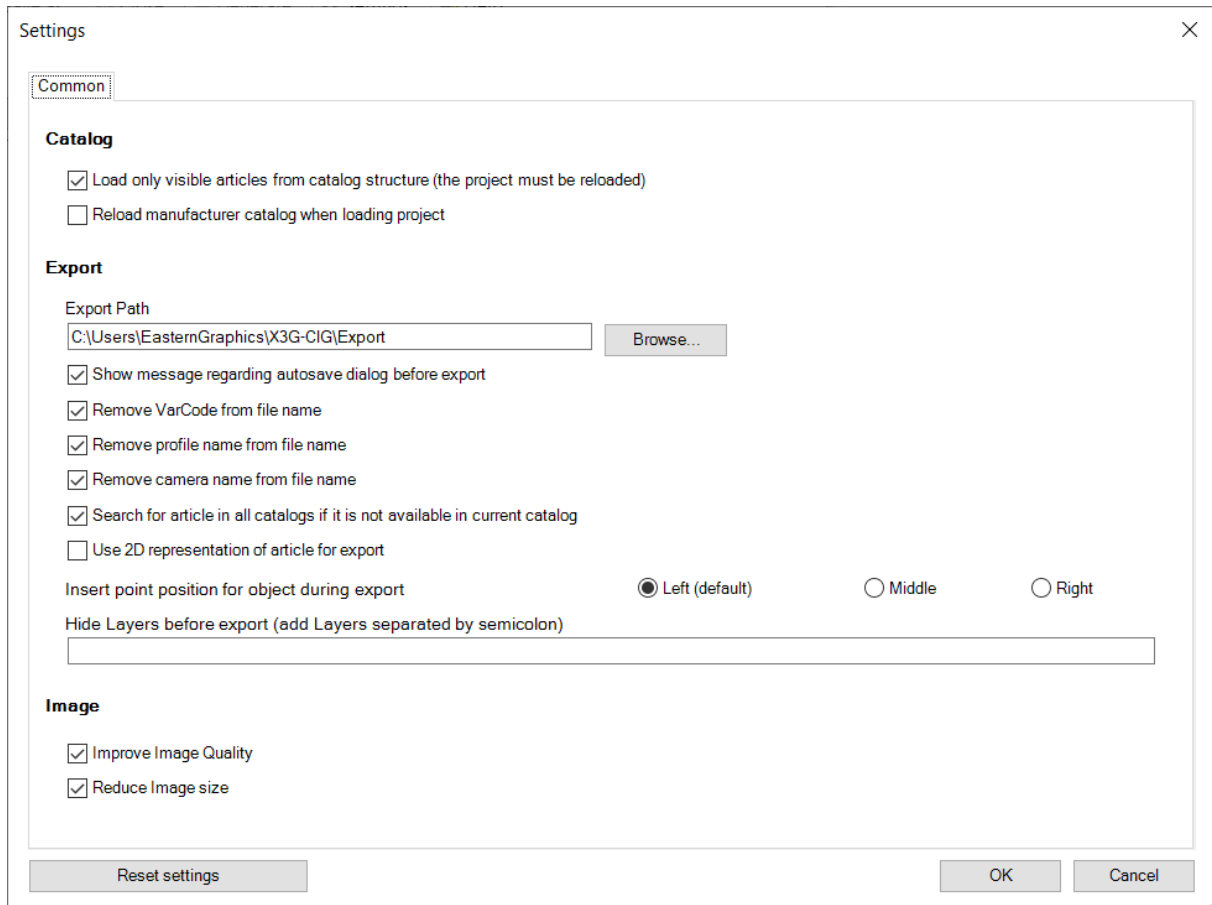
## 4.2 Application Menu

Icon	Functionality	Notes
	New	Creates a new project
	Open	Opens an existing project
	Save	Saves the current project
	Save as	Saves the current project with another name
	Close	Closes the current project
	Generate	Starts the export process
	Settings	Opens the program settings of the plugin
	Help	Opens the Online-help of the plugin

In the program settings, a path is defined in which the images are automatically stored after generation. The creation of the images can be aborted at any time by clicking the *Stop* button in the progress window of the render process.

## 4.3 Settings

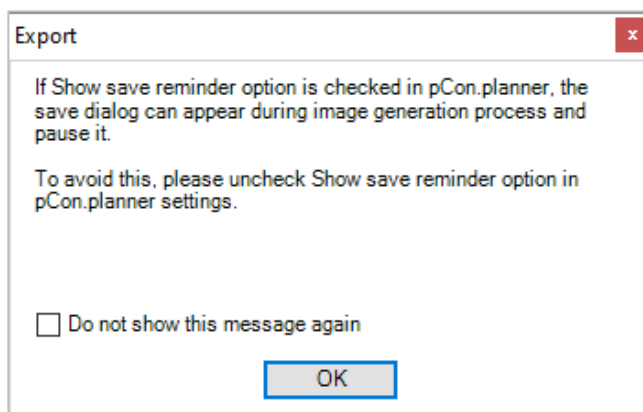
The menu entry *Settings* opens the separate setting's dialog for the plugin. Here you can define general settings for your projects.



Within the dialog you can specify whether only the visible articles from the catalog structure should be loaded or all articles stored in the catalog.

In addition, you can specify here whether a manufacturer catalog should always be reloaded when loading a profile. In this way a comparison with the installed data can always be made.

Furthermore, the export path for the generated article images can be defined via the setting's dialog.



With the setting *Show message regarding Autosave dialog before export* you can determine whether the message text should be displayed automatically before each export.

### **File name settings**

The checkboxes

- Remove VarCode from file name
- Remove profile name from file name
- Remove camera name from file name

are means to modify the names of the image files. If all checkboxes are active, the file name will consist in the article name only.

### **Search for article in all catalogs if it is not available in current catalog**

If this box is checked, the article will be searched in all catalogs of the manufacturer as far as it is not available in the currently selected catalog.

### **Use 2D representation of article for export**

Activate this box to have the 2D representations of the articles exported to images. If this box is not checked, images of the 3D representation of the articles are generated.

### **Insert point position for object during export**

Used to define position of the insert point for the export: *Left* (set by default), *Middle* or *Right*.

### **Hide layers before export**

Enter all layers here that should be hidden for the export. Use semicolon to separate the layer names.

### **Image settings**

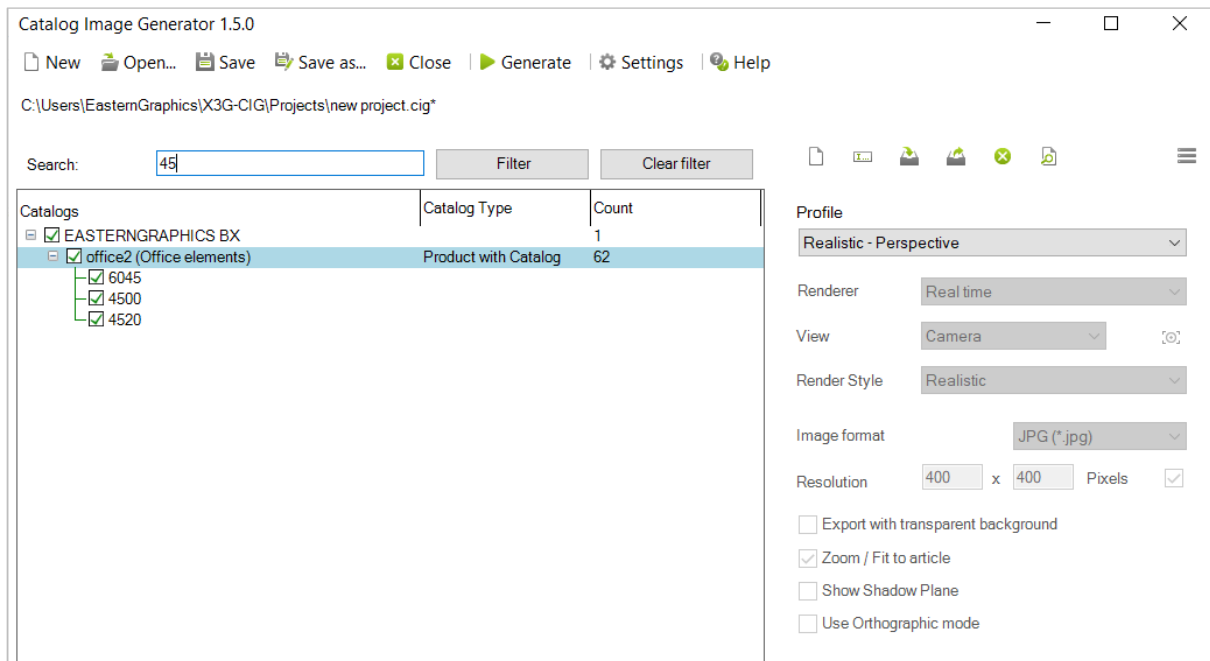
Checking *Improve image quality* will result in an overall improved quality of the resulting images.

If checked, *Reduce image size* will decrease the file size of the resulting image files.

## 4.4 Filter Line

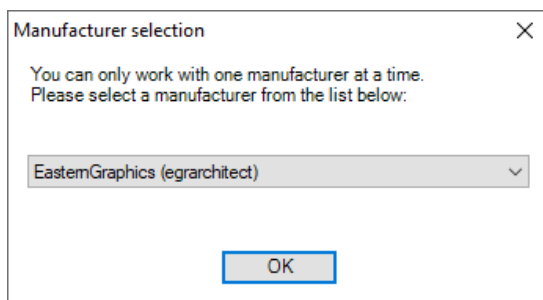
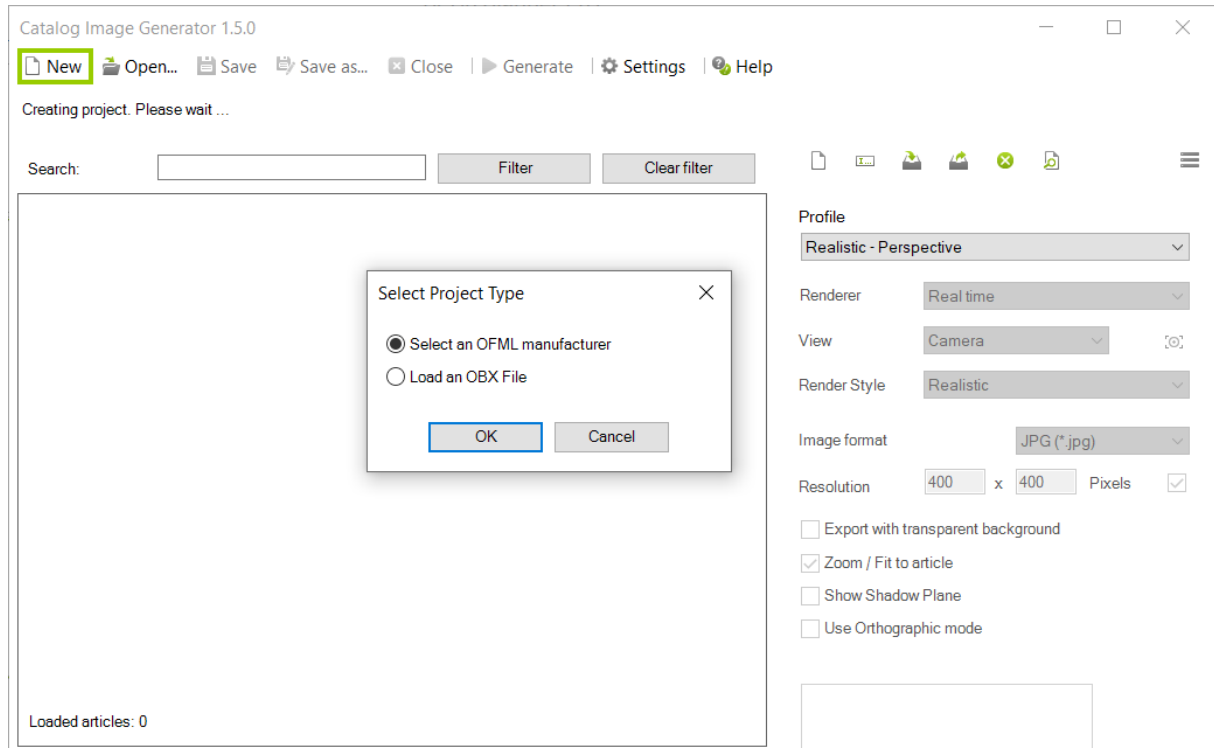
The filter line is used to search for article numbers and product or catalog names within the current project. Type in a part of an article number or product name/series to get a list of your results in the navigation area.

To reset the filter and display all items for the selected manufacturer, please click the *Clear filter* button.



## 4.5 Navigation Area

After clicking *New* to create a new project in the Catalog Image Generator, the dialog *Select Project Type* appears. This is where to choose whether to load a locally saved OBX file or to open the OFML catalogs of a manufacturer.



Confirming the option *Select an OFML manufacturer* by clicking *OK* opens the *Manufacturer selection* dialog. Select the desired manufacturer from the existing list. After confirming the selection by clicking on the *OK* button, the manufacturer is displayed with its series and articles in the navigation area.

The navigation area displays information on catalogs, catalog type, quantity, profile used and distribution region for the entries.

Profiles can be assigned to the entire manufacturer, but also to individual manufacturer series or even to a single article.

To do this, you either select the manufacturer entry in the navigation area with a mouse click and set the corresponding profile via the *Profile* property in the *Profile Editor*. A profile assigned in this way is then set for the entire manufacturer catalog and adopted in the *Profile* column of the navigation area.

If you want to change the profile only for a single series or article, the procedure is the same. All you have to do is select the desired series or article by clicking on it in the navigation area.

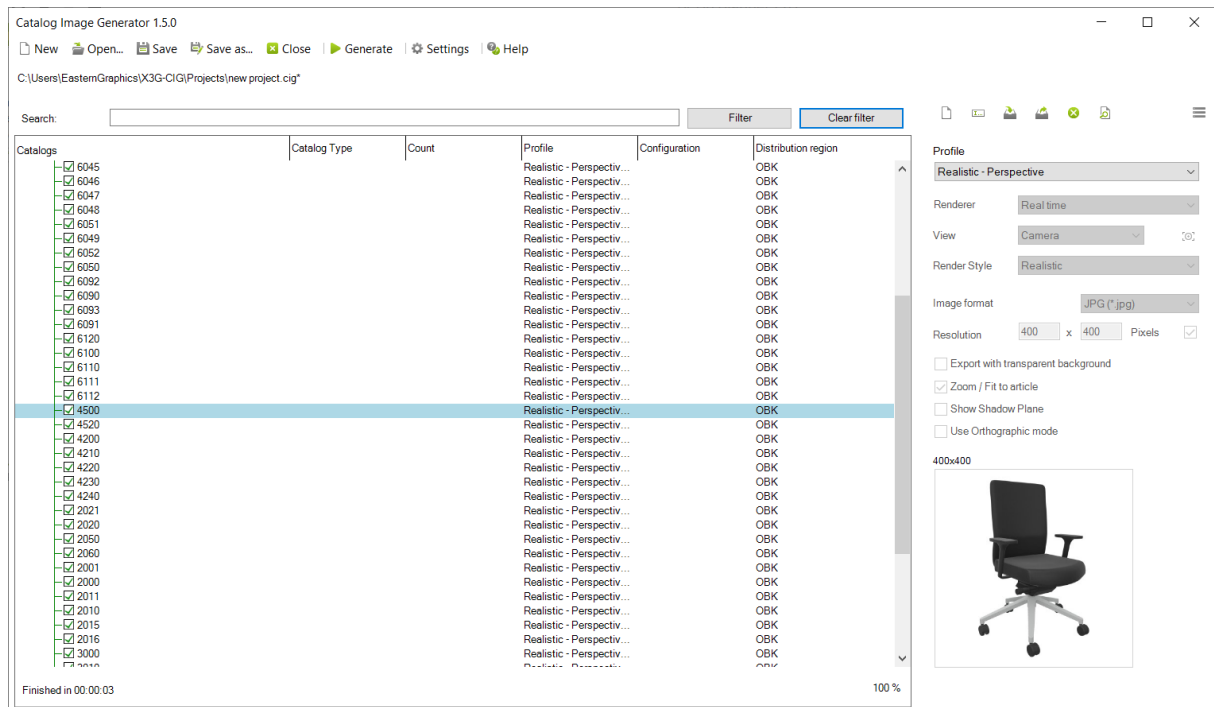
**Note:** If different profiles are set within a manufacturer catalog or a manufacturer series, this can be recognized by the entries *\*VARIOUS\** in the Profiles column.



To select multiple catalogs or articles at once, hold down the CTRL key during the selection when clicking with the mouse. The adjustment then affects all entries marked in this way. With the SHIFT key you can mark a selection range on which all adjustments should be effective afterwards.

By right-clicking on an individual article it is possible to transfer the article into the pCon.planner and then to adjust the view in the active viewport of the pCon.planner and to make further settings.

The preview of an individual article can be displayed by double-clicking on the desired article in the navigation area.



## 4.6 Profile Editor vs. Configuration Profile

Via the hamburger menu, you can switch from *Profile editor* view to *Configuration profile*.

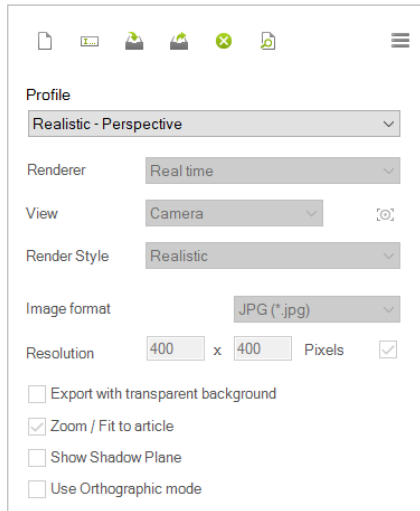
### Profile Editor

- General settings for your render profile for your exports
- Contains predefined profiles
- Settings for customized profiles

### Configuration Profile

- Select a configuration profile
- Profiles contain properties of selected articles as well as their values
- Export of all properties contained in a configuration profile as well as their respective values

## 5 Profile Editor










In the profile editor you can make numerous adjustments to the selected profile.

By default, the Catalog Image Generator offers four predefined profiles: *Realistic - Perspective*, *Hidden Line - Orthographic*, *Photorealistic - Perspective* and *Photorealistic – Variable aspect ratio*. These standard profiles cannot be edited.

Of course, it is also possible to create your own new profiles and customize them individually. Your own profiles are based on the specifications of one of the standard profiles. To use the settings from a standard profile for your individual profile, select it in the *Profile* drop-down menu and then click the *New Profile* icon.

### 5.1 Profile Editor Toolbar

Icon	Functionality	Notes
	New Profile	Creates a copy of the selected profile
	Rename Profile	Allows renaming of the profile
	Import Profile	Imports a saved profile
	Export Profile	Exports the profile
	Delete Profile	Deletes the selected profile
	Profile Preview	Updates the preview
	Configuration profile view	Switch to configuration profile view of the profile editor

## 5.2 Configuration Options of the Profile Editor

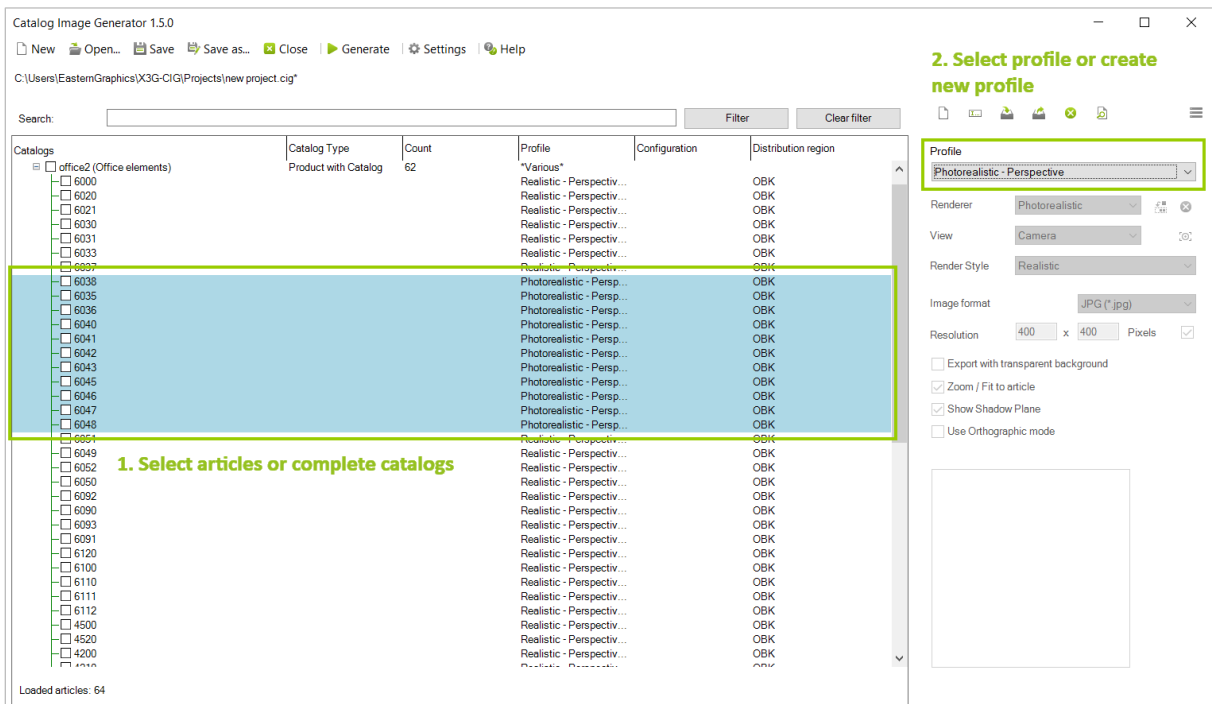
### Configuration option *Profile*

**Please note:** To use a profile with articles or complete catalogs in your current project, you first have to select the articles/catalogs.

Use the *Profile* configuration option to set the current profile for the selection in the navigation area. Here you can switch between the default profiles and your own profiles.

How to proceed to assign a profile to your articles or catalogs:

1. Select a catalog or articles by clicking the respective entries in the navigation area. To select multiple items, hold the CTRL key down while clicking all of the entries. The catalogs/articles will be marked in blue.
2. In the profile editor, open the drop-down menu *Profile* and select the profile that you want to assign from the profile list. Alternatively, click the *New profile* icon to create a new profile.
3. This profile will automatically be assigned to the selection. The name of the assigned profile will be visible in the navigation area, *Profile* column.

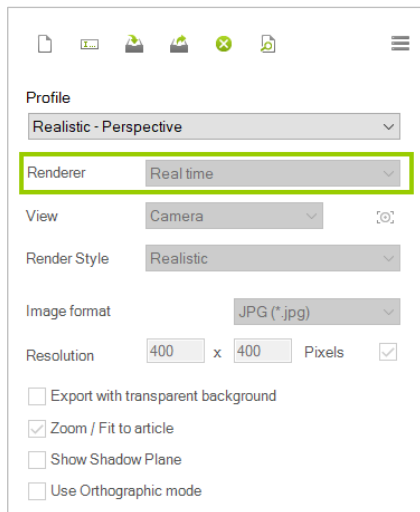


The screenshot displays the 'Catalog Image Generator 1.5.0' application. The main window is titled 'C:\Users\EasternGraphics\X3G-CIG\Projects\new project.cig\*'. It features a search bar and a 'Filter' button. The main area is a table with columns: Catalogs, Catalog Type, Count, Profile, Configuration, and Distribution region. A selection of articles (6038-6048) is highlighted in blue. A green box highlights the 'Profile' column for these selected items, which shows 'Photorealistic - Perspective'. A second green box highlights the 'Profile' dropdown menu in the right-hand 'Profile Editor' panel, which is also set to 'Photorealistic - Perspective'. The interface includes a menu bar, a search bar, and various configuration options like Renderer, View, Render Style, and Image format.

Catalogs	Catalog Type	Count	Profile	Configuration	Distribution region
office2 (Office elements)	Product with Catalog	62	"Various"		
6000			Realistic - Perspectiv...		OBK
6020			Realistic - Perspectiv...		OBK
6021			Realistic - Perspectiv...		OBK
6030			Realistic - Perspectiv...		OBK
6031			Realistic - Perspectiv...		OBK
6033			Realistic - Perspectiv...		OBK
6037			Realistic - Perspectiv...		OBK
6038			Photorealistic - Persp...		OBK
6035			Photorealistic - Persp...		OBK
6036			Photorealistic - Persp...		OBK
6040			Photorealistic - Persp...		OBK
6041			Photorealistic - Persp...		OBK
6042			Photorealistic - Persp...		OBK
6043			Photorealistic - Persp...		OBK
6045			Photorealistic - Persp...		OBK
6046			Photorealistic - Persp...		OBK
6047			Photorealistic - Persp...		OBK
6048			Photorealistic - Persp...		OBK
6051			Realistic - Perspectiv...		OBK
6049			Realistic - Perspectiv...		OBK
6052			Realistic - Perspectiv...		OBK
6050			Realistic - Perspectiv...		OBK
6092			Realistic - Perspectiv...		OBK
6090			Realistic - Perspectiv...		OBK
6093			Realistic - Perspectiv...		OBK
6091			Realistic - Perspectiv...		OBK
6120			Realistic - Perspectiv...		OBK
6100			Realistic - Perspectiv...		OBK
6110			Realistic - Perspectiv...		OBK
6111			Realistic - Perspectiv...		OBK
6112			Realistic - Perspectiv...		OBK
4500			Realistic - Perspectiv...		OBK
4520			Realistic - Perspectiv...		OBK
4200			Realistic - Perspectiv...		OBK
4210			Realistic - Perspectiv...		OBK

**Please note:** Profiles that were created after a project has been opened are by default only available within this project. If you want to use such a created profile for another project, you have to export it. Globally created profiles are profiles that are created while no project is active. They are not available in a project by default and are not automatically saved in the project. To use such a profile in a single project, import this profile into the desired project.

### Configuration option *Renderer*



For the creation of the article images, the renderer types *Real time* as well as *Photorealistic* are available. For the standard profiles, the *Renderer* is automatically set according to the profile type and cannot be changed.

For custom profiles, the *Renderer* option allows to choose freely between the *Real time* and *Photorealistic* renderer.

When *Photorealistic* is set as a *Renderer*, it is possible to assign the current drawing and its OSPRay settings as a template for the profile.

### Configuration option *View*

The *View* configuration option provides you with the standard views *Front*, *Left*, *Right*, *Top*, *South-East* and *South-West*. The *Camera* option is a predefined camera view.

Additional cameras can be set in the current pCon.planner drawing (*View* tab, *Camera* button). They will be visible in the *View* drop down menu under their name and will be saved together with the project.

Your individual cameras are adjusted to the article by inserting an article into your drawing:

1. Select an article in the *Navigation area*.
2. Open the context menu by a click on your right mouse button.
3. Click *Insert article*.
4. Open the *View* tab of pCon.planner.
5. Click *Camera*.
6. Insert the *Camera* into your drawing and adjust it in relation to the article.

Please note that cameras saved with a project will be reimported to the planning when the project is opened again, overwriting cameras currently placed in the drawing.

**Attention:** The article must not be rotated in the pCon.planner, the article must keep its alignment to the coordinate origin! Moving the article is possible at any time.

### Configuration option *Render Style*

For the renderer *Real time*, the known display modes from the pCon.planner are available:

- *Wireframe*
- *Hidden line*
- *Colored*
- *Textured*
- *Shaded*
- *Realistic*

In addition, you can also create your own display modes in pCon.planner with the help of render styles.

In pCon.planner you can create your own display modes (tab *View* -> *Render styles*) by changing, for example, line widths, contrast or ambient occlusion. These rendering styles, like the predefined modes, can be assigned to any viewport in pCon.planner and selected in the *Catalog Image Generator*.

Further details about creating your own render styles can be found in our pCon.planner Online-Help under the following links:

- [Render styles](#)
- [Create your own render styles](#)

### Configuration option *Image format*

With the option *Image Format* you can select in which image format your generated images should be saved. The available formats are JPG and PNG.

**Note:** For the standard profiles, only the format JPG is available for saving.

### Configuration option *Resolution*

The *Resolution* configuration option allows you to define the image resolution for your generated images.

- Preset resolution for *Realistic - Perspective*, *Hidden Line - Orthographic* and *Photorealistic - Perspective*: 400x400 pixels.
- Preset resolution for *Photorealistic – Variable aspect ratio*: 2000 pixels (longest edge).

If you need to use a different resolution, create a new profile. For profiles based on *Photorealistic – Variable aspect ratio* we recommend a minimal length of 1000 pixels for the longest edge. To switch from a fixed aspect ratio to a various aspect ratio in an individual profile, remove the checkmark at the right side of the *Resolution* line.

### **Export with transparent background**

Check this option to create images with a transparent background. Only available if PNG is selected as image file format.

### **Configuration option *Zoom/ Fit to article***

With the configuration option *Zoom/Fit to article* you can determine whether the size of the article should automatically adjust to a previously altered resolution.

If the checkbox *Zoom/fit to article* is activated, the article is automatically fitted to the selected resolution. In order to be able to follow the change visibly, update the preview by double-clicking on the respective article in the navigation area.

### **Configuration option *Show Shadow plane***

This option allows you to have your article images created with a shadow plane underneath the article. To make the activated shadow layer visible for an article, update the preview by double-clicking on the respective article in the navigation area.

**Note:** Using the *Show Shadow plane* configuration option is only available for new custom profiles.

### **Configuration option *Use Orthographic mode***

This setting allows you to activate the orthographic display for articles.

**Note:** The option *Use Orthographic mode* is only available for new custom profiles.

## 5.3 Import and Export Profiles

### Export profile

If you have created a new profile, you can export it and reuse it in other projects. To do this, click on the icon



in the toolbar of the profile editor. A new initialization file with the specified name of your profile is created in the global profile directory, in which the created profile settings are stored.

### Import profile

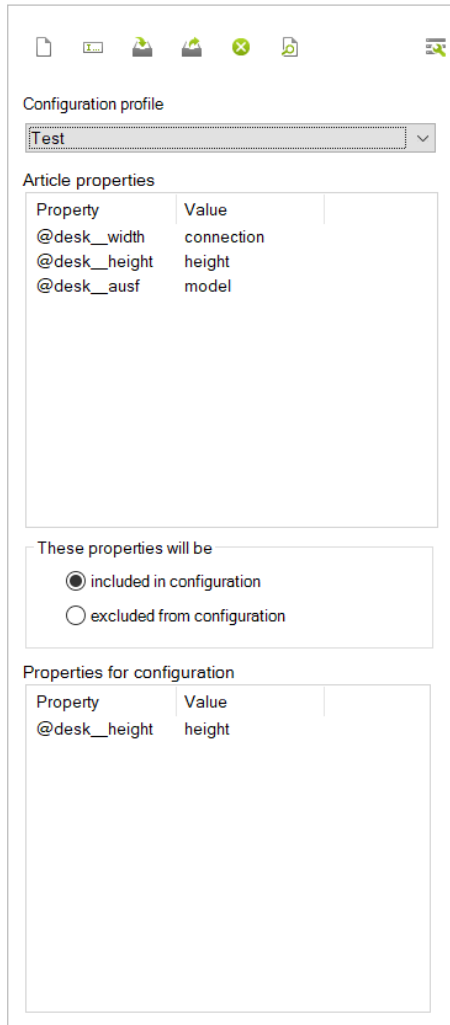
Exported profiles can be used in new projects at any time. To do this, import the respective profile file by clicking



on the icon in the toolbar of the profile editor. The *Open Dialog* will open which refers to the global profile directory and lists all exported profiles. After the import, the settings saved for the profile are automatically displayed in the profile editor.

**Note:** If you use your own render styles, you should take into account that they are stored in the pCon.planner itself in a computer-bound manner. For this reason, using an exported profile that contains settings for your own render style may cause problems on another computer system without this render style.

## 6 Configuration Profiles



Configuration profile

Test

Article properties

Property	Value
@desk__width	connection
@desk__height	height
@desk__ausf	model

These properties will be

included in configuration

excluded from configuration

Properties for configuration

Property	Value
@desk__height	height

Configuration profiles are used to define which article properties with their respective values are used with the *Render profiles*.

All properties contained in a configuration profile are by default exported in all of their possible variants. When a configuration profile is used, the file names will be generated using the article number. File names will also include the property names and values from the *Properties for configuration* list in chronological order (top – down).

### Include/exclude properties

By default, all properties in the lower list are included in the configuration. The radio buttons in the middle of the dialog are used to decide whether the properties in the *Properties for configuration* list are *included in configuration* or *excluded from configuration*.








### Using Configuration profiles together with articles

An individual configuration profile can be assigned to every single article in your project or to a number of articles/complete catalogs.

The Configuration profile used together with an article is visible in the Configuration column of the Navigation area.



## 6.1 Configuration Profile Toolbar

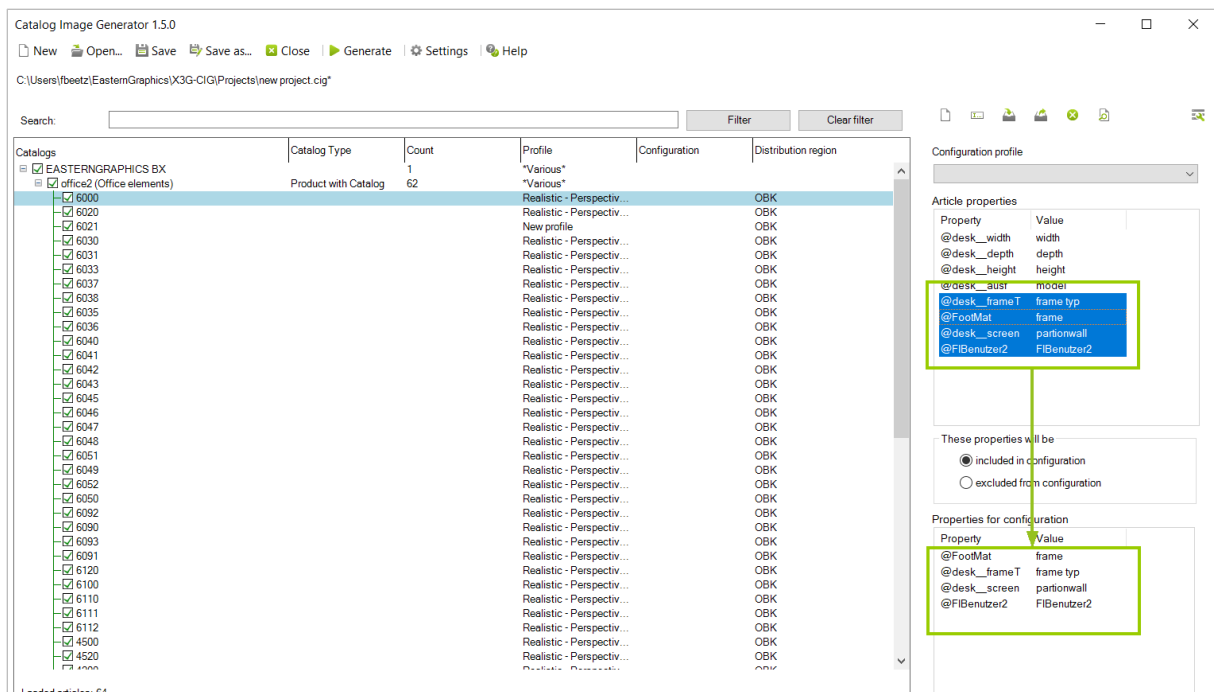
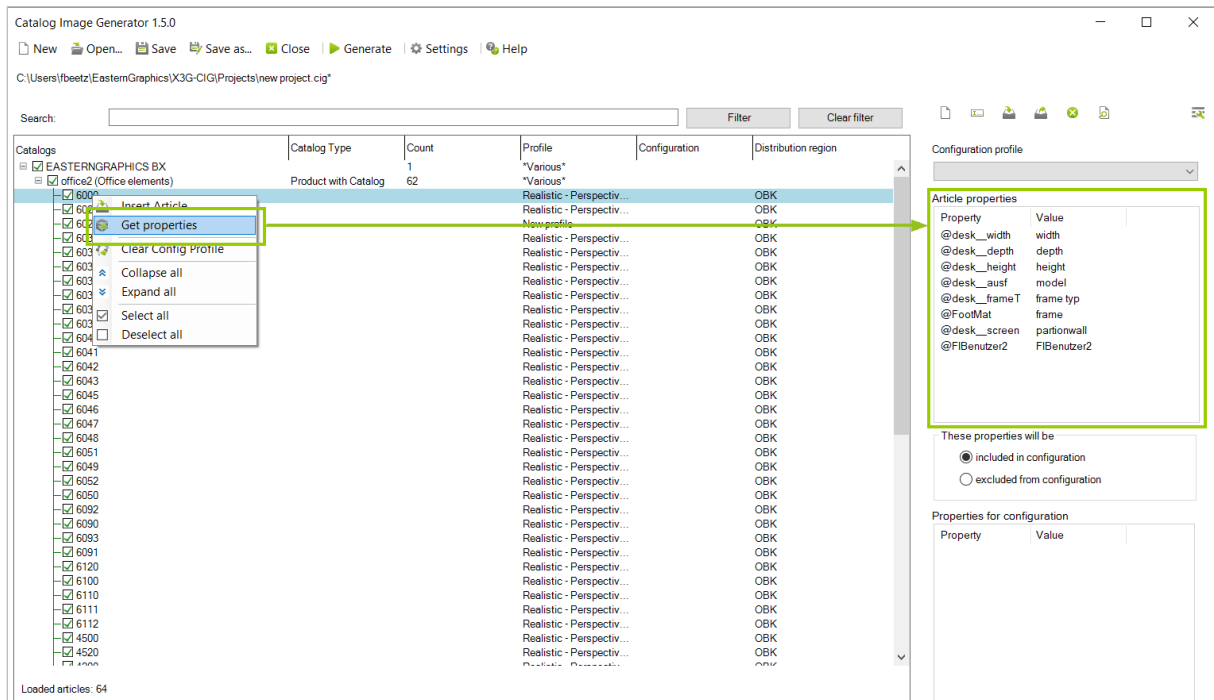
Icon	Functionality	Notes
	New Configuration profile	Creates a new configuration profile
	Rename Configuration profile	Allows renaming of the profile
	Import Configuration profile	Imports a saved profile
	Export Configuration profile	Exports the profile
	Delete Configuration profile	Deletes the selected profile
	Profile Preview	Updates the preview
	Switch to render profile view	Switch to render profile view of the profile editor

## 6.2 Creating a Configuration Profile

1. Click *New profile* and enter a name for the configuration profile.
2. Confirm by clicking *OK*.

## 6.3 Adding Properties to a Configuration Profile

1. Select an article in the *Navigation area*.
2. Right click to open context menu.
3. Click on *Get properties*.
4. The properties of the selected article will be transferred to the *Article properties* list in the *Configuration profile*.
5. In this list, select all properties you want to use for your *Configuration profile* (multi selection by CTRL and click) and drag them to the *Properties for configuration* list.

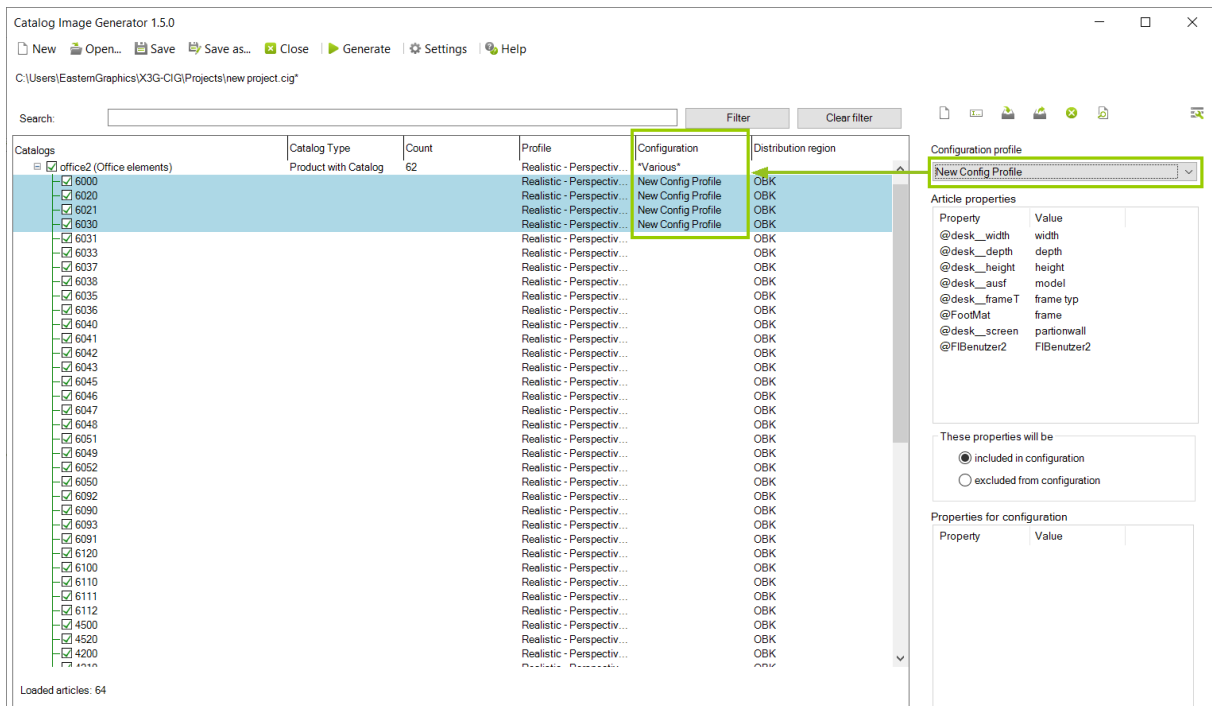


## 6.4 Deleting Properties from a Configuration Profile

To delete a property from a configuration profile, select it in the Properties for configuration list. Then, press the DEL key on your keyboard.

## 6.5 Assign a Configuration Profile to Articles

1. Select the articles you want to use together with a configuration profile in the *Navigation area*.
2. Select a *Configuration profile* from the drop-down menu in the *Configuration profile* view.
3. The *Configuration profile* will be assigned to the selected articles and will be visible in the *Configuration* column of the *Navigation area*.

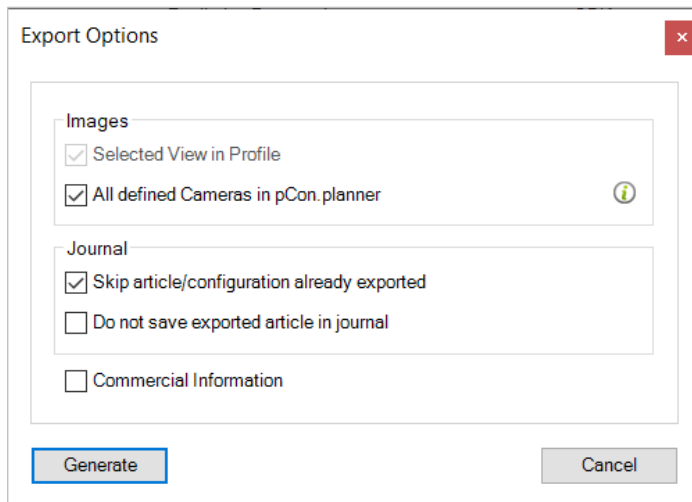


The screenshot shows the 'Catalog Image Generator 1.5.0' application window. The main area contains a table with columns: 'Catalogs', 'Catalog Type', 'Count', 'Profile', 'Configuration', and 'Distribution region'. The 'Catalogs' column shows a tree view with 'office2 (Office elements)' expanded, listing articles 6000 through 6112, 4500, 4520, 4200, and 4100. The 'Profile' column for these articles is 'Realistic - Perspectiv...'. The 'Configuration' column is currently empty, and a dropdown menu is open, showing options: 'Various', 'New Config Profile', 'New Config Profile', 'New Config Profile', and 'New Config Profile'. The 'Distribution region' column shows 'OBK'. On the right side, there is a 'Configuration profile' dropdown menu set to 'New Config Profile'. Below it, there is an 'Article properties' section with a table of properties and values, and a section for 'These properties will be' with radio buttons for 'included in configuration' (selected) and 'excluded from configuration'. At the bottom, there is a 'Properties for configuration' section with a table of properties and values.

Property	Value
@desk_width	width
@desk_depth	depth
@desk_height	height
@desk_aust	model
@desk_frameT	frame typ
@FootMat	frame
@desk_screen	partitionwall
@FIBenutzer2	FIBenutzer2

## 7 Generate Images

After making all your settings for rendering and configuration, use the *Generate* button to start the export project for your article images. After clicking *Generate*, an export dialog opens.



The dialog box titled "Export Options" contains the following settings:

- Images**
  - Selected View in Profile
  - All defined Cameras in pCon.planner ?
- Journal**
  - Skip article/configuration already exported
  - Do not save exported article in journal
- Commercial Information

Buttons: **Generate** (highlighted with a blue border), **Cancel**

### Images

If needed, opt into using all defined cameras in pCon.planner for the image creation here.

### Journal

A log file will be written during the export, listing all articles and variants that are already exported. *Skip article/configuration already exported* prevents prolonged render times by omitting all articles previously exported.

*Do not save exported article in journal* prevents the article from being logged during the export.

Furthermore, you can decide here whether to export the commercial information on the articles together with the images.

## 8 Hints for the Profile Manager in pCon.planner

In pCon.planner, a profile is a container which permanently stores any number of configured article properties. Thus, the *Profile Manager* available in pCon.planner is used to manage these containers. The profile manager can be found within the *Article* tab.

Further details can also be found in our pCon.planner online help: [Profile manager](#).

If you have activated such a profile in the profile manager, the properties will be assigned to the respective article according to the properties stored in the profile when creating the images with the *Catalog Image Generator* plugin. However, the prerequisite for this is that the respective article also has the corresponding properties. A typical scenario in connection with the *Catalog Image Generator* plugin is, for example, the assignment of colors or graphic properties that differ from the initial article properties.



### **Legal remarks**

© EasternGraphics GmbH | Albert-Einstein-Straße 1 | 98693 Ilmenau | GERMANY

This work (whether as text, file, book or in other form) is copyright. All rights are reserved by EasternGraphics GmbH. Translation, reproduction or distribution of the whole or parts thereof is permitted only with the prior agreement in writing of EasternGraphics GmbH.

EasternGraphics GmbH accepts no liability for the completeness, freedom from errors, topicality or continuity of this work or for its suitability to the intended purposes of the user. All liability except in the case of malicious intent, gross negligence or harm to life and limb is excluded.

All names or descriptions contained in this work may be the trademarks of the relevant copyright owner and as such legally protected. The fact that such trademarks appear in this work entitles no-one to assume that they are for the free use of all and sundry.